

(913) 724-9000 or
info@baseorchamber.org

Chamber Luncheon Dates and Topics

September 16, 2010
Ft. Leavenworth
Activity Update

12:00 noon
Community National Bank
Community Room
15718 Pinehurst Drive

Oct. 21, 2010
After-hours mixer
5:30 p.m.
Holy-Field Winery
18807 158th Street



Basehor Chamber of Commerce August 2010



2010 Chamber Board: L-R Valarie Grant, Kim Miller-Tallman, Jeffery Sutton, Mary Fallesen, Aladdin Ashkar, Gayle Runnels, Jim Bebb, Deb Taylor, Carla Kaiser and Carl Slaugh

Contact the Chamber

(913) 724-9000

info@baseorchamber.org

P.O. Box 35
Basehor, KS 66007

www.baseorchamber.org/

2010 Board Members

Aladdin Ashkar, President, Community National Bank Vice President

Deb Taylor, Vice President, CPA, Kramer & Associates, CPAs, LLC

Gayle Runnels, Secretary, Citizen's Savings & Loan

Mary Fallesen, Treasurer, United Title Company

Jim Bebb, Community National Bank

Valarie Grant, Owner, Creative Promotions

Carla Kaiser, Director, Basehor Community Library

Carl Slaugh, Resident, City of Basehor

Jeffery Sutton, Attorney, Gibbens, Sutton & Sonntag

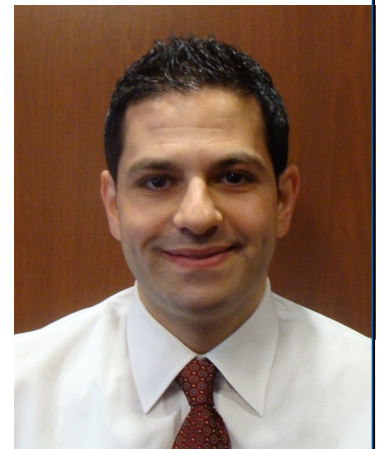
Sean Fender, Farm Bureau Financial Services

Note from the President

We hope you had a fantastic summer. We have had a busy summer at the Basehor Chamber. We kicked off summer with a bang back in June with our annual golf tournament. I'm happy to announce that we were able to raise \$2,000 towards two scholarships to be given out next spring. If you didn't get a chance to play this year please stay tuned for next year's tournament and join us! In July we awarded Don "Slim" Wilson with the Citizen of the Year Award for all his years of community service. We also awarded Melanie Morris with the Spirit Award for her on-going enthusiasm for promoting our community.

We also officially welcomed four NEW businesses to Basehor! Pastimes Bar and Grill, Dollar General, Farm Bureau Financial Services and China Dragon Chinese Restaurant. If you haven't stopped to visit any of our new businesses, please drop by and say hello. They are all wonderful additions to our community.

We are excited for our future events, to include our annual wine tasting event in October at Holy-Field Winery and our annual silent auction later in December. Please continue to track our events at www.baseorchamber.org. If you or your business would like to sponsor an event, please don't hesitate to contact us info@baseorchamber.org or call us at 913-724-9000.



Aladdin Ashkar, President

Reece & Nichols Premier Realty Steve Rosenthal—Owner

<http://premier.reeceandnichols.com/>

Steve Rosenthal has been the franchise owner of Reece & Nichols Real Estate in Basehor since 1993. He also has franchise offices in Tonganoxie, Leavenworth and Eudora. In 2008 they had 80 real estate agents and that number has decreased in 2010 to 57 agents.

A key ingredient of their success is great service. Their agents have extensive local training and continuing education. This has contributed to their #17 ranking among all real estate companies in the KC metro area. Reece & Nichols as a real estate firm ranks #1 among all real estate firms in the KC metro area.

Steve has served on the Leavenworth County planning commission for 15 years, the last three as chairman. Steve and his wife Yvonne have two children and one grandchild.
(913) 724-2300 steverosenthal@reeceandnichols.com



China Dragon

The Basehor Chamber of Commerce had a ribbon cutting ceremony August 10, 2010 to welcome the China Dragon Chinese restaurant to the Basehor area. The China Dragon is located at 15510 State Ave., Suite 6A, Basehor, Kansas. The new owner is Yue Rong Lin from Fuzhou, China. The family also operates two other China Dragon restaurants in Kansas City, Missouri.

The China Dragon is open Mon-Thur 11:00 a.m. to 9:30 p.m.; Fri. & Sat. 11:00 a.m. to 10:00 p.m.; and Sunday 11:30 a.m. to 9:00 p.m. The menu is available at www.chinadragonmo.com.

Order or take-out information at (913) 728-2698/2798.

Pictured at right L-R: Mary Fallesen, Basehor chamber board; Anita Chen, manager; Jian Bing Chen, cook; family member, cook; Jue Rong Lin, owner, Aladdin Ashkar, chamber president; Sean Fender and Gayle Runnels, chamber board.



Farm Bureau Financial Services Sean Fender, Agent

A ribbon cutting took place August 4, 2010 at the Basehor office of Farm Bureau Financial Services. The business is under new ownership by agent Sean Fender. The office is located at 15604 Pinehurst Dr., Ste. 5A, Basehor, KS 66012.

Also providing service at the Basehor office are Wick Hollingsworth and Jennifer Haden.

L-R: Carla Kaiser, Gayle Runnels, and Mary Fallesen, Basehor chamber board members; Wick Hollingsworth, agent, Sean Fender, agent and Jennifer Haden, sales associate; Deb Taylor, Aladdin Ashkar and Valarie Grant, Basehor Chamber. Aladin Ashkar is president of the Basehor Chamber of Commerce, Deb Taylor, vice president, Gayle Runnels, secretary and Mary Fallesen, Treasurer.